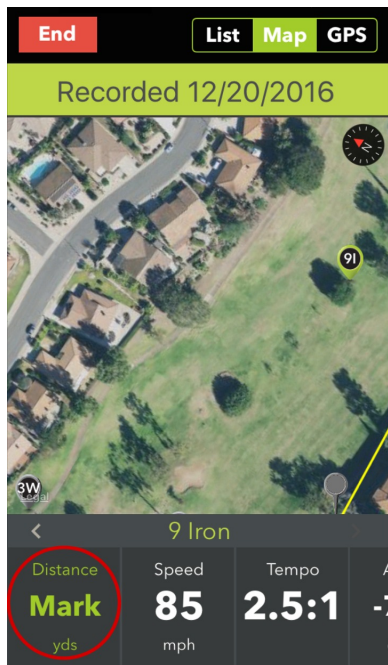


SENSE1/SENSE3 - Limited Mode Shot Marking

As you may know, we introduced PLAY ROUND - LIMITED MODE when we launched our SENSE3 and SENSE1 products. This gives players semi-automated shot tracking for shots hit with clubs equipped with ClubHubs. Previously, PLAY ROUND was restricted to players with 10 or more ClubHub sensors.

The app functions automatically to record the GPS location for the origination of a shot. To get the app to record the shot distance, the player must interact with the app when they arrive at the endpoint of a recorded shot. At this time, they can "Mark" the shot in one of two ways.



From the Map view, the **Mark** button will be on the screen at the bottom left. Just touch **Mark**.



From the List view, swipe right on a shot to reveal the green **Mark** button that appears. Touch **Mark** to mark.

Once marked, the Map will show the shot and the distance. The list view will also show the distance. In this case, the 9 iron.

